

## Loading the PDF Settings

Download the .zip archive named *Quark 7 PDF Export presets-Mac & PC.zip* that contains the files:

1. **OPI High Quality Quark7**  
(The PDF preset to load for Quark 7 on the Mac)
2. **OPI High Quality Quark731.xml**  
(The PDF preset to load for Quark 7 on the PC)

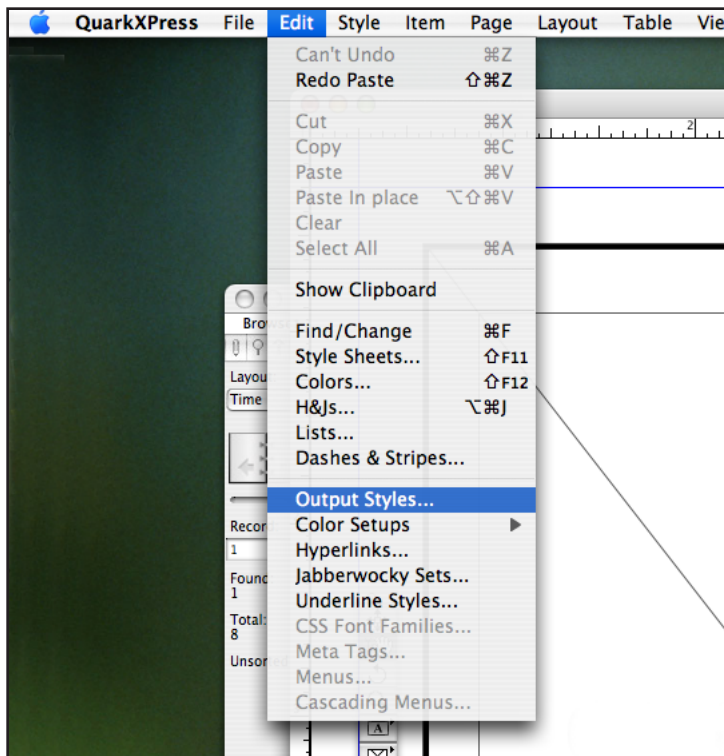
You can either load the settings you downloaded through the **Edit\Output Styles...** menu (this paper shows you how) or use the windows on the next pages as a guide for the options you choose when you create and name your own. If you're going to import the settings (the easiest way), extract the file from the .zip to your desktop. Go to the following pages to see the windows and settings you will choose if you created your own settings

## About crop marks...

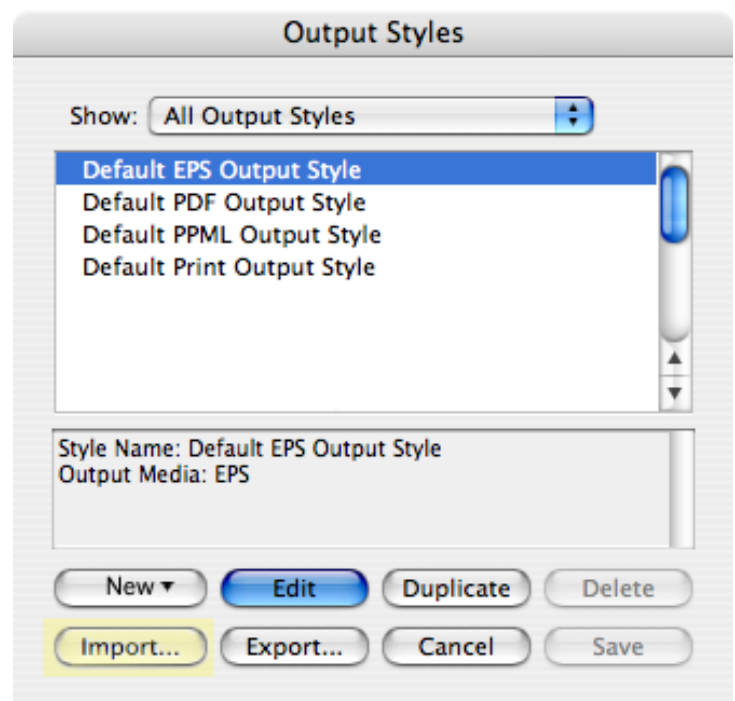
*Please do not include them* on text files. Our imposition software adds the crop marks where they are needed. However, if your document will bleed, make sure you set the original document to bleed 1/8" all around. The PDF settings from OPI will take that into account and give you the correct sheet size, e.g. a 6 x 9 will become 6.25 x 9.25

If the file you are sending is a cover (see the document **Creating a Cover Spread.pdf**), please set the document bleed to 0.5" so you can add spine marks (your actual bleeds only have to extend 1/8" beyond the book trim). When you export the PDF make sure you set the bleed amount to 0.5" and turn the Marks on so you will get the cover trim marks as well.

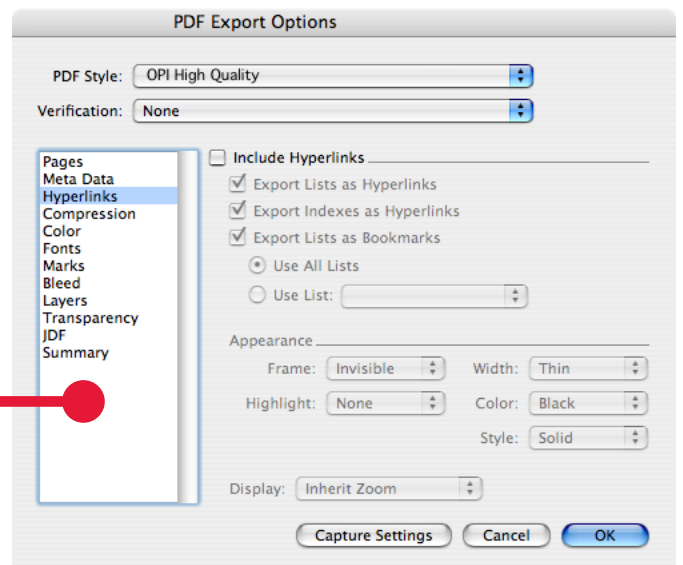
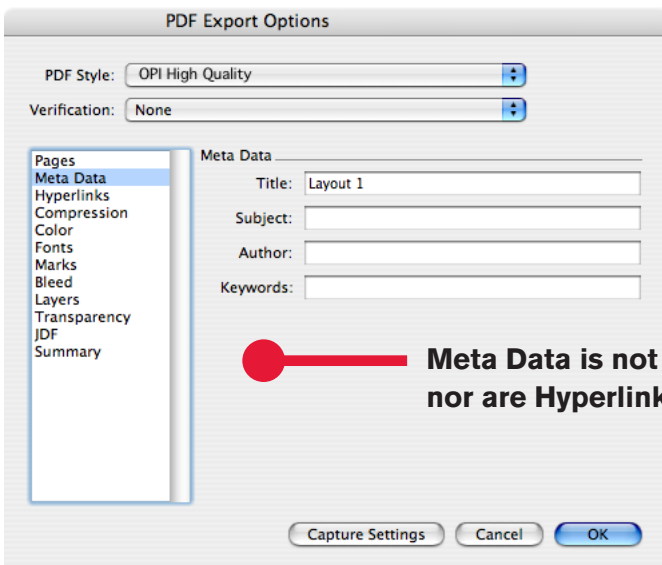
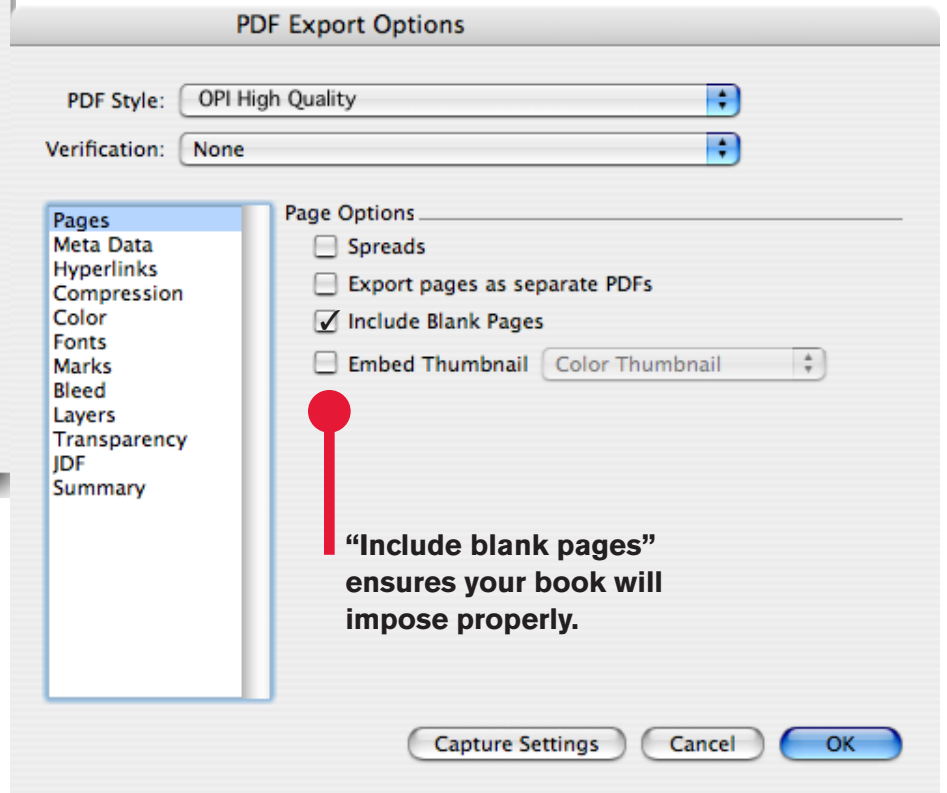
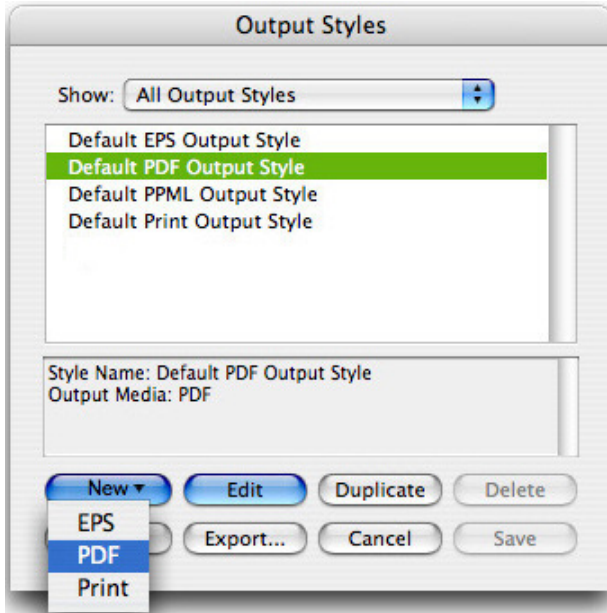
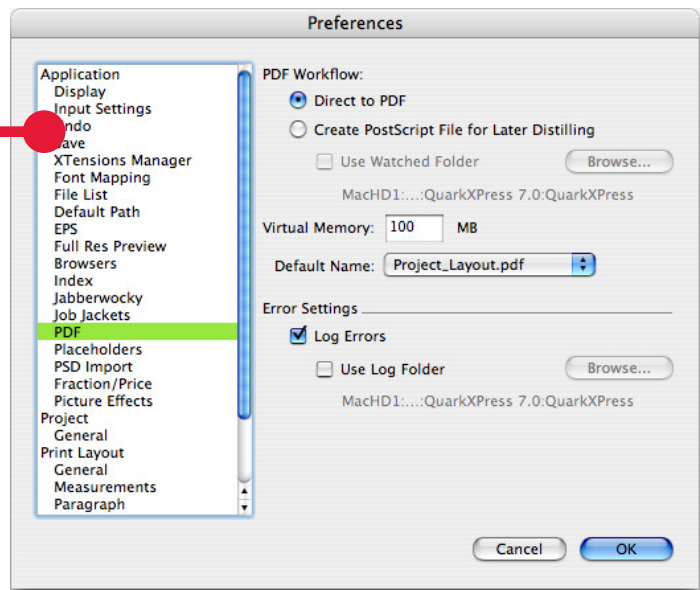
### Step 1...

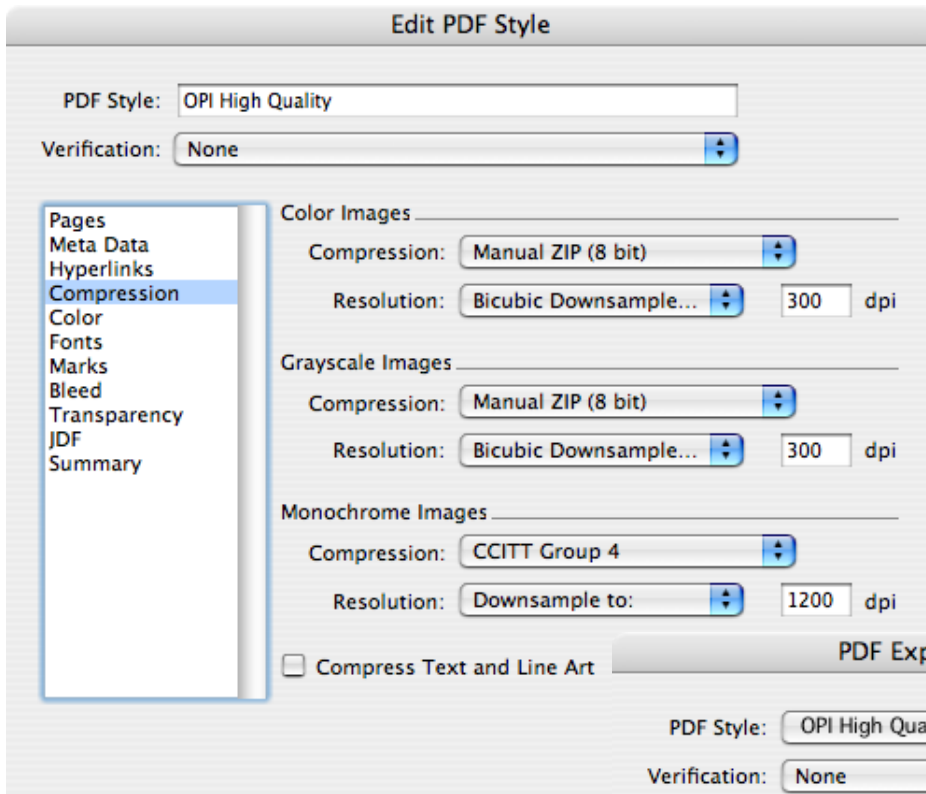


### Step 2... Choose "Import..." and navigate to the OPI High Quality Quark7 file

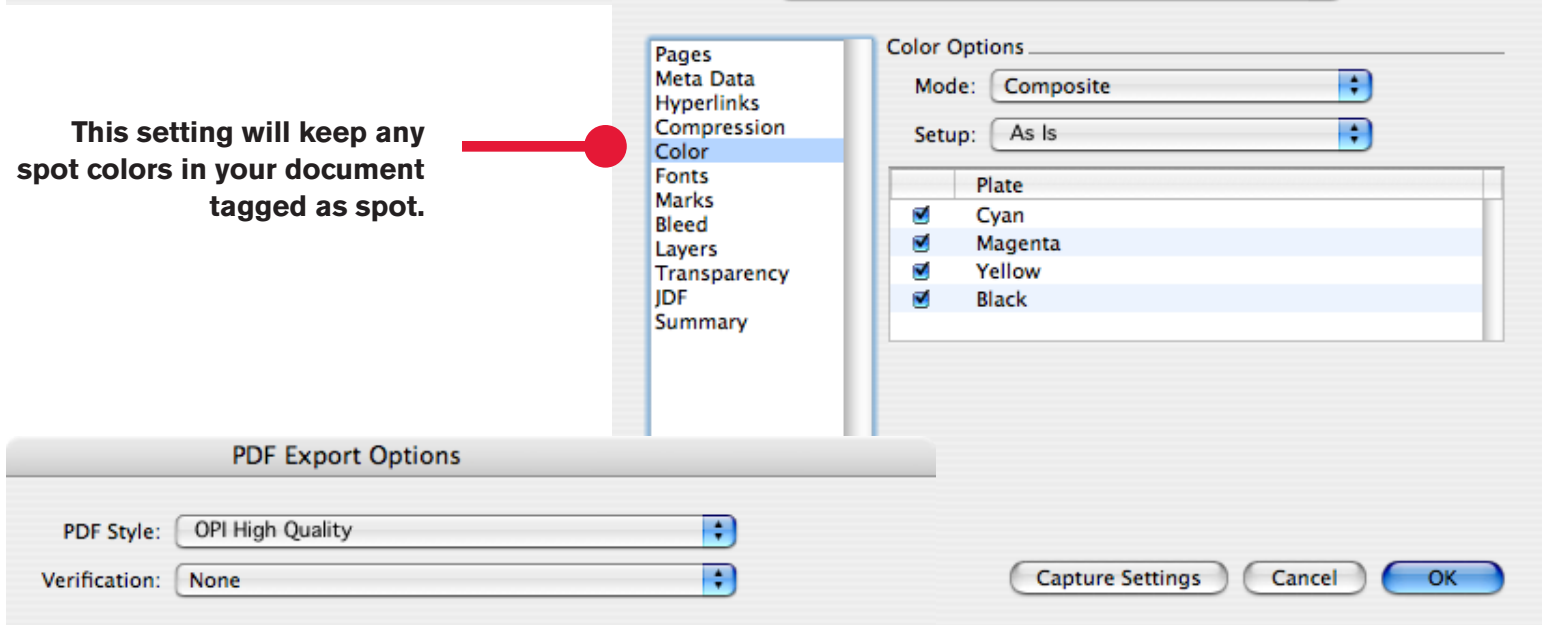


Whether you Import your settings or create them yourself, make sure you toggle to the Preferences at some point to instruct Quark to export "Direct to PDF."

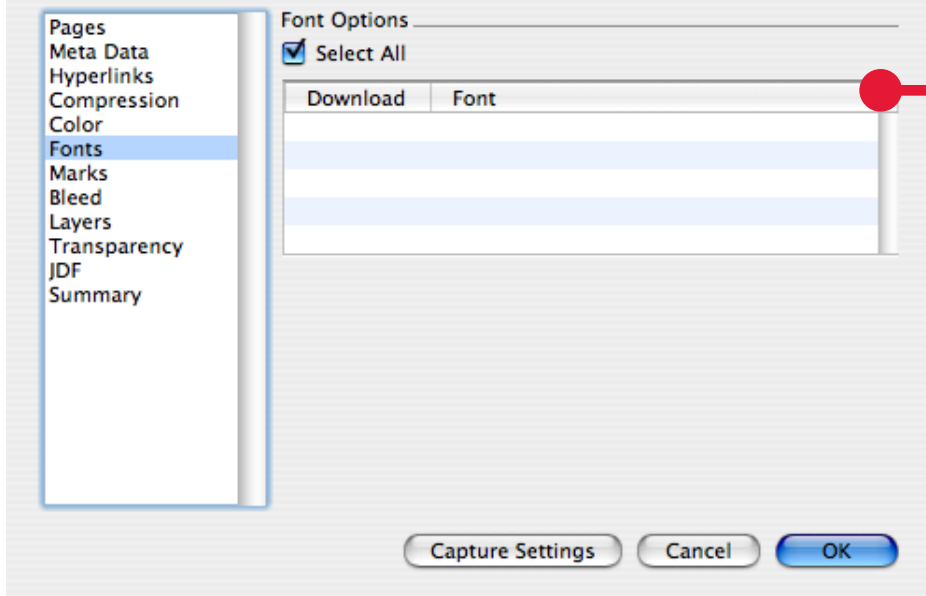




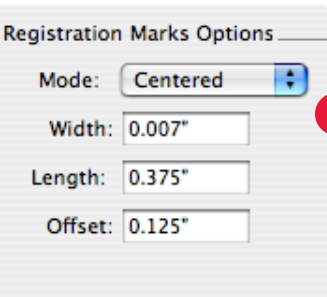
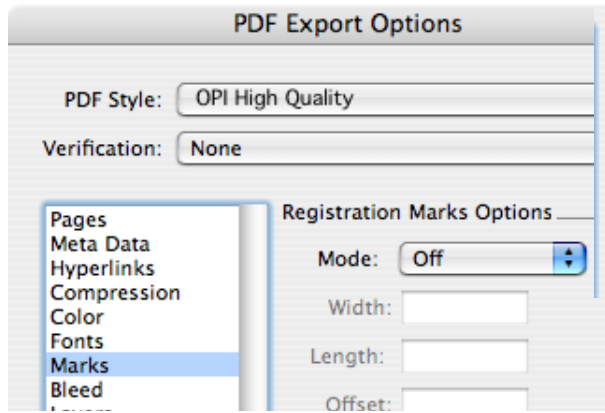
Don't set any output or ICC profiles for your document, as it is sure to be different than our output devices. Please do make sure that your text is 100% black and not made from RGB. All RGB images will convert to CMYK at our color printer (or grayscale at the B&W printer). You should convert them first so you will have a better idea of what will output. Many RGB blues look much brighter on the screen than they will print.



This setting will keep any spot colors in your document tagged as spot.

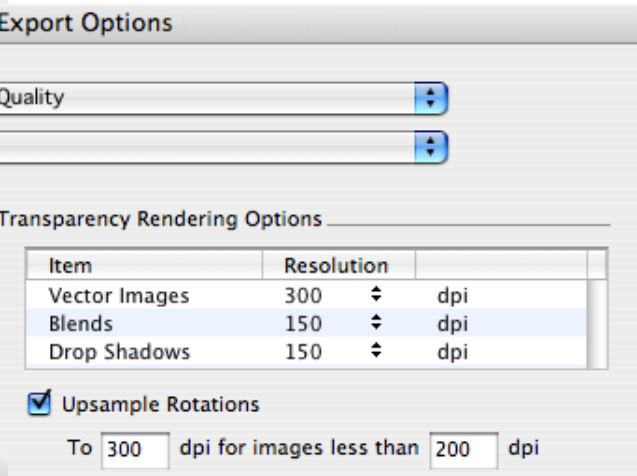
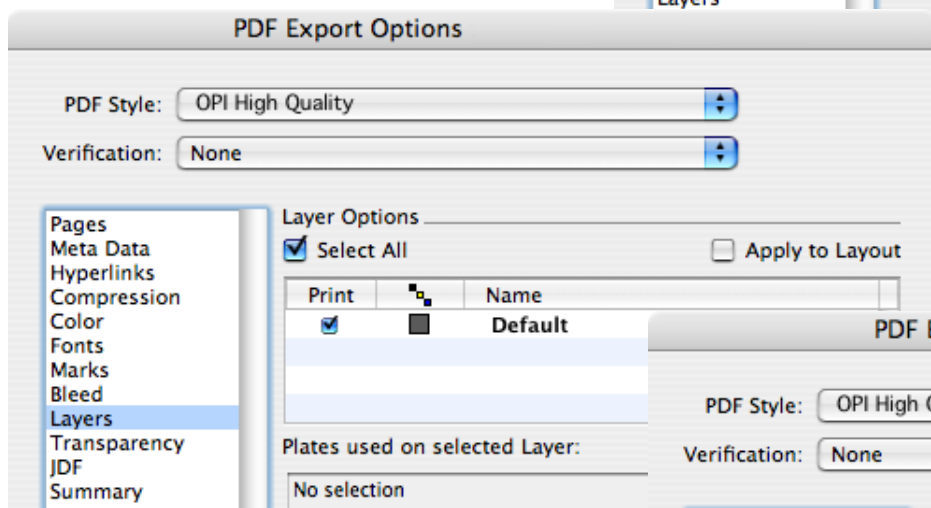
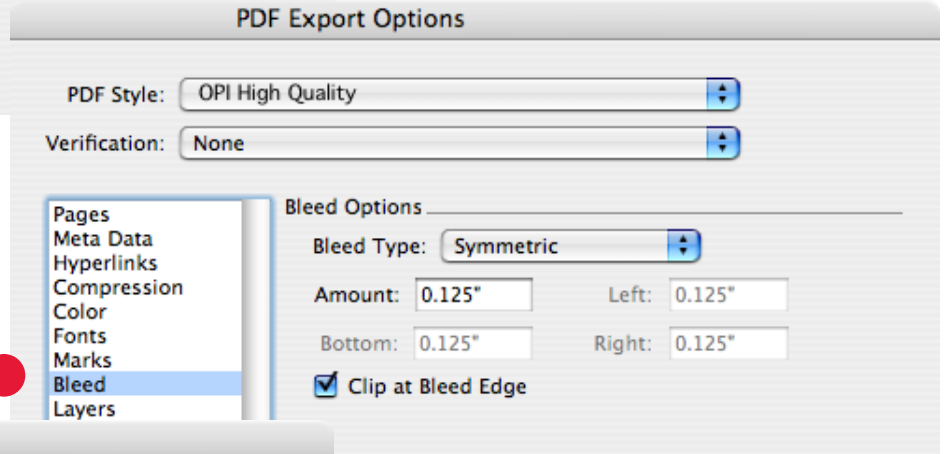


This completely embeds your fonts, the setting we prefer.

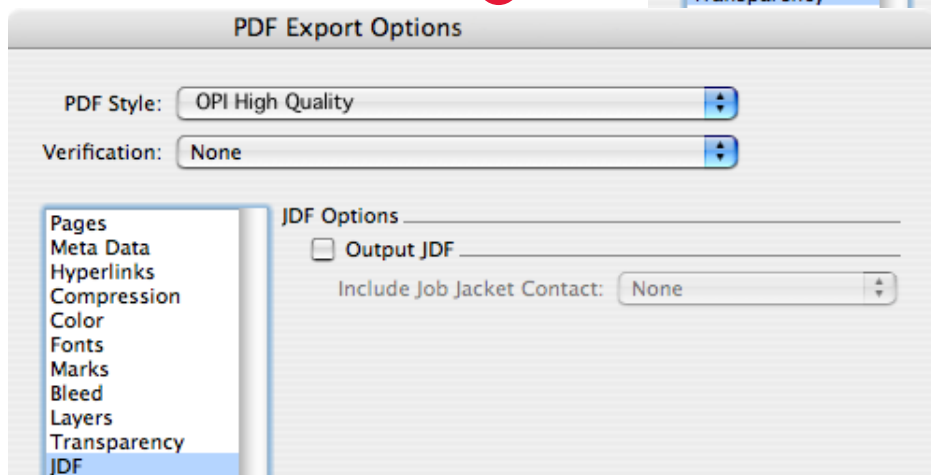


Crop marks should be **off** for text files (the body of a book) and turned **on** using these specs for cover spread layouts (see the document *Creating a Cover Spread.pdf*).

Use the bleed setting only if you have images, etc. that bleed, otherwise your document should be the final trim size.



Use the default settings for Layers, Transparency, and JDF.



Finished! Now save your settings with the name of your choosing.